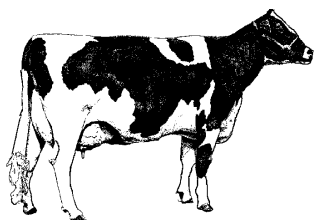


# 21<sup>st</sup> Century Dairy Conference

*A conference for Professional Dairy Producers that the entire family can enjoy*

Presented by: Graham-Shields Strategic Forums



## June 21 – 24, 2009

Kalahari Resort-Wisconsin Dells, WI



### Presenting Sponsors include:



An annual dairy conference with a blend of break-out and keynote sessions, along with networking opportunities, designed to give you a competitive edge; with information on practices and technology you can take home and put to work now.

Bring your entire family to enjoy this wonderful resort.

### Lead Sponsors are:



### Cooperating Sponsors are:



*Contact one of these sponsoring companies for more information*

## Agenda

### Sunday, June 21

5 – 8 Registration

### Monday, June 22

8:00 Opening/Welcome/Introductions

Dairy Production/Dairy Demand Globally - Martin Bates, President, Fonterra USA

*Fonterra is the world's leading exporter of dairy products and responsible for more than a third of the international dairy trade with customers and consumers in more than 140 countries.*

9:30 Refreshment Break with continuing informal discussions

10:00 Managing an Immigrant Labor Force

Effective Management/Understanding the Culture – Jorge Estrada, LCI, Inc.

Getting Your HR House in Order – Jose Olivieri, Michael Best & Friedrich

Lunch

1:15 Break-outs (Five break-outs to choose from – rotate three times)

**Nutrition: Grouping Strategies** Dr. Mike Allen, Michigan State Univ.

**Reproduction: Sexed Semen** John Metzger, Trans Ova Genetics

**Labor: Gaining a Competitive Edge** Jorge Estrada, Leadership Coaching

**Waste/Energy: Carbon Credits** Chad Martin, AgraGate

**Genetics: Using Genomics** Nate Zwald, Alta Genetics

Sessions repeat at 2:30 and 3:45

6:00 – 8:00 Reception/Cook-out Don't miss this chance to visit with old friends and meet new ones as we relax and enjoy refreshments and dinner. If weather permits, we'll be outside by the "quiet" pool.

Special Note: If you have family members attending Monday night only, tickets are \$20 for adults and \$10 for children 6 – 16. These tickets can be purchased during registration and are only good for the Monday evening meal.

## Tuesday, June 23

7:00 – 7:45      Early-bird Discussion – Join the early-birds for open discussion about any topic that is brought up by the attendees. Great opportunity to get opinions from fellow attendees on something you've been wondering about. Some past attendees have ranked this session as the most valuable of the conference because you can find out what other smart people are thinking about issues that are important to you. (A continental breakfast will be provided for those attending the early-bird.)

8:30 – 9:30      Panel of Producers using COMPUTERIZED AUTOMATIC CALF MILK FEEDER  
Panelists include: Holly Thompson, Marlene Ward, Jackie Ihrke and Marlys Hinckley  
*Coordinated by Land O'Lakes Purina Feed*

9:30 – 10:15      "Understanding the Curves in the Road with a Multi-Site Dairy"  
*Coordinated by Diamond V*

10:15 – 10:45      Refreshment Break with continuing informal discussions

10:45 – 12:00      A Producer Panel from outside the Upper Midwest answering YOUR questions.  
Panelists include: Don Bennink – FL; Eric Palla – NM; John Douglas – OH/KY

Afternoon at leisure: Golf tournament, family time, informal discussions

Evening on Your Own to enjoy the area

## Wednesday, June 24

8:00 – noon      Technology sessions by Presenting Sponsors

**RUMENSIN IN LACTATING COWS; An Epidemiological Study** presented by Elanco Animal Health  
Dr. Michael Hodgman, Technical Consultant-Dairy, Elanco Animal Health

**COMPUTERIZED AUTOMATIC CALF MILK FEEDER** presented by Land O'Lakes Purina Feed  
Tom Johnson, Research Associate, Land O'Lakes Animal Milk Products Co.

**SHRINK THE SHRINK** presented by Diamond V  
Bill Stone, D.V.M., Ph.D. - Technical Service Director, Field Research, Eastern U.S. & Eastern Canada

**What can I cut from my pre-fresh diet in tough economic times?** presented by SoyPLUS  
Dr. Jesse Goff, Professor of Bio Medical Sciences at Iowa State University

**See you next year – June 20 - 23, 2010**

# Registration Form

(Everyone Attending Any Function Must Register and Get a Name Badge)

Name \_\_\_\_\_ Business Name \_\_\_\_\_

Street \_\_\_\_\_ City \_\_\_\_\_ State \_\_\_\_\_ ZIP \_\_\_\_\_

Phone \_\_\_\_\_ E-Mail \_\_\_\_\_

Other Employees with your dairy attending: \_\_\_\_\_

## Cost

Producer Registration # \_\_\_\_\_ at \$395 \_\_\_\_\_

Producer Registration # \_\_\_\_\_ at \$495 \_\_\_\_\_

Producer Registration # \_\_\_\_\_ at \$295 \_\_\_\_\_

Industry Registration # \_\_\_\_\_ at \$695 \_\_\_\_\_

Industry Registration # \_\_\_\_\_ at \$795 \_\_\_\_\_

Golf & Box Lunch # \_\_\_\_\_ at \$70 \_\_\_\_\_

TOTAL PAYMENT ENCLOSED \$ \_\_\_\_\_

## Make checks payable to Graham-Shields Strategic Forums

Monday evening ONLY meal tickets may be purchased for family members at the registration table for \$20.00 per adult and \$10 per child age 6 – 16. Everyone attending any portion of the conference, including meals, must register prior to the event. Name tags will be your ticket for meals and sessions.

## Fee Schedule

**Dairy Producers:** \$395 until May 15. \$495 after May 15. Employees of same dairy only pay \$295 per additional registration after the first registration is paid.

**Golf:** \$70 per player. Note number of players above. **All golf fees must be paid prior to the conference.**

**Industry:** Industry representatives may attend: \$695 until May 15; \$795 after May 15. No discount for more than one person from each company.

**Hotel Rooms:** To reserve a hotel room, work with your sponsor or call the Kalahari Resort directly at 877-525-2427. Be sure to ask for a room in the 21<sup>st</sup> Century Dairy Conference block to receive the \$129 conference rate.

**Send Registration Form:** Send completed registration form with appropriate payment made payable to Graham Shields Strategic Forums, 189 Eureka Towne Center Dr., Suite 369, Eureka, Missouri 63025. Questions call 314-276-4880. More information at [www.dairyconference.com](http://www.dairyconference.com)

*Conference organizers reserve the right to change sessions and presenters where schedule conflicts dictate.*